



EvenSprey CLUB

Operator Manual

VITAX LTD



Vitax Limited
Owen Street
Coalville
LE67 3DE
ENGLAND

UK & EC DECLARATION OF CONFORMITY

Herewith we declare that the machinery described below is in accordance with the relevant health and safety requirements of “The Secretary of State” and “The EC Council Directives” concerned with the supply of machinery compatibility. No alterations are to be made to the machine without the prior consultation and approval of Vitax Limited otherwise this Declaration may become invalid. This equipment must be commissioned, used and maintained strictly in accordance with the operating and maintenance instructions issued with the machine. Operators must be trained in accordance with the recommendations given in the operating and maintenance instructions issued with the machine.

Description of machine:	EVENSPREY CLUB
Machine Serial number:	As per the build sheet (<i>supplied</i>)
Date of supply:	As per invoice date
Relevant EC Council Directives:	Machinery Directive 2006/42/EC and Subsequent amendments.
Relevant Secretary of State act:	The Supply of Machinery (<i>Safety</i>) Regulations 2008.

Issued on 7th May 2021 by *A. Gurney* on behalf of Vitax Ltd.

Signed - *A. Gurney*

Position of signatory: - *Operations Director*

INTRODUCTION

IMPORTANT - PLEASE READ THIS MANUAL BEFORE USE

This is essential if you are to learn how to operate this equipment correctly. Failure to do so could result in personal injury or equipment damage.

This manual should be considered a permanent part of the equipment and should remain with the machinery if sold on.

INTENDED USE/DISCLAIMER

The EvenSprey CLUB is designed for use as a chemical/fertiliser sprayer. Use in any other way is considered as contrary to the intended use. The manufacturer accepts no liability for damage or injury resulting from misuse and these risks must be borne solely by the user.

The EvenSprey CLUB should only be operated, serviced and repaired by persons familiar with its characteristics and acquainted with the relevant safety features (accident prevention).

INTRODUCING THE EVENSPREY CLUB SPRAYER

Thank you for purchasing the EvenSprey CLUB Pedestrian Sprayer.

This machine is the culmination of many years development and is the most advanced small sprayer in its field. This instruction booklet includes the following information:

- User application guide and machine operation
- Technical specification and calibration guide
- Parts list and machine diagram

EvenSprey CLUB Machine Assembly

The EvenSprey CLUB (both 3 nozzle boom option and hand lance option) comes ready for use. The machine is packed with a tank filter in the neck of the tank to prevent debris from inadvertently entering the tank when filling.

As the battery is unlikely to be fully charged, due to storage before delivery, it is advisable to charge the battery fully. This may take up to 6 hours. See maintenance and charging instructions on page 6 of this manual.

EvenSprey CLUB Boom Sprayer Assembly

The 1.5 metres 3 nozzle boom is detached from the main frame of the machine inside the box. To assemble the boom:

- 1) Undo the 'J' bolts at the top of the boom mount.
- 2) Locate the boom onto the top of the boom mount ensuring that the central spray nozzle is in the centre of the boom mount itself.
- 3) Locate the 'J' bolts over the boom and into the holes in the mount and re-tighten the hand wheels to lock the boom in place. Ensure that the spray nozzles are pointing directly down before tightening in place.

The EvenSprey CLUB is now in boom spraying mode.



To remove the boom for storage and accessing narrow gateways by either releasing the 'D' clamps near front wheel and removing the boom sprayer assembly completely, or by reversing the first 3 steps mentioned above, and securing in place via the 'terry' clip on top of the 'S' bend.



EvenSprey CLUB Hand Lance Assembly

To attach the hand lance, disconnect the 12mm tubing from the pump outlet (see bottom right pic) and simply attach the coiled hose into this fitting. The hand lance can be used whilst the spray boom is attached to the boom mount.

The EvenSprey CLUB is now in hand lance-spraying mode.



Machine Operation and User Application Guide - Three-Nozzle Spray Boom

Both the boom and hand lance facilities on the EvenSprey CLUB offer flexible application rates due to the ability to interchange nozzle sizes. The EvenSprey CLUB boom is supplied and fitted with brown 110° flat fan nozzles.

Nozzles options compatible with the EvenSprey CLUB boom are as follows:

SPRAY GUIDE TABLE

Nozzle	Output Litre per minute/per nozzle	Pressure	Total Output
Grey 06/110°	1.47 litres per minute	1.0 bar	4.41 litres per minute
Brown 05/110°	1.33 litres per minute	1.4 bar	3.99 litres per minute
Red 04/110°	1.28 litres per minute	1.7 bar	3.84 litres per minute
Blue 03/110°	1.12 litres per minute	2.4 bar	3.36 litres per minute

The table above is accurate to +/-2.5%

IMPORTANT

- Never use an 80° nozzle in the boom, as this will result in an uneven application.
- Do not use nozzles smaller than a Blue 03, as this could result in damage to the pump.
- Replace nozzles at least annually, to ensure accuracy of applications.

Speed of Travel and Calibration

For ease of use, the EvenSprey CLUB has been designed to minimise the variable associated with sprayer calibration. The table above explains the output with the standard nozzles and the output achievable using other nozzle options. The EvenSprey CLUB pump delivers a constant flow, but walking speed over the ground is a variable that needs to be controlled, in order to deliver an even application rate. The EvenSprey CLUB is designed for use at 2.25 mph or 1 metre per second (a comfortable walking speed), when boom spraying.

Nozzle Overlap

Flat fan spray nozzles are designed to overlap. For accurate spraying it is recommended using a spray pattern indicator, which allows the operator to see clearly the area covered.

Hand Lance Information

During hand lance operation, the pump is designed to stop when the Hand Lance trigger is in the 'Off' position.

WARNING: if the tank is empty, or there is air trapped in the supply line to the lance, the pump can continue to run when the hand lance trigger is off and thus discharge the battery. After hand lance use, always ensure the handlebar on/off switch is in the 'Off' position.

IMPORTANT NOTE: do not use a nozzle smaller than 06 on the hand lance, as this could cause damage to the pump.

EVENSPREY CLUB MAINTENANCE

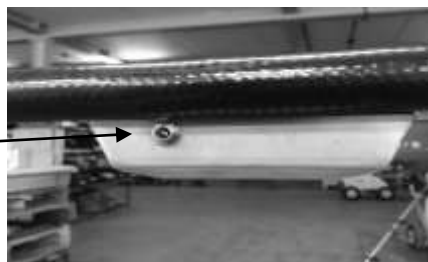
Charging

After every use the battery should be fully charged.

To charge the battery:

- 1) Plug the output lead on the battery charger unit into the charger socket, which is found on the switch unit on the handlebar of the machine.
- 2) Plug the battery charger into a mains electricity socket and switch on.

Charge point located here



The battery charger is designed so that the battery can be left on charge until the machine is required. Although this will not damage the battery it is not recommended to do this very often.

Cleaning

It is recommended that the machine pipe work, strainers and nozzle filters are thoroughly washed out after every use to avoid cross contamination of products and to extend the pump life. Follow the instructions printed on the side of the tank. These instructions are duplicated below:

1. Always read and comply with the manufacturer's instructions for the handling of the product being sprayed.
2. Empty the contents of the tank into a suitable container.
3. Fill approximately 2 litres of cleaning fluid/water into the tank and rock the tank gently back and forth to clean the tank.
4. Spray approximately 1 litre of the cleaning fluid through the machine as normal.
5. Tip the tank to empty the remaining cleaning fluid out of the tank.

Technical Specification and Calibration Guide

The EvenSprey CLUB is categorised as a PA1 and PA6A spray applicator. Commercial use of this spray equipment requires BASIS qualification relevant to PA1 and PA6A equipment.

EvenSprey CLUB Technical Specification

	Machine Only	Machine Boxed
Length	1240 mm	1000 mm
Height x Width	1000 mm x 580 mm excl boom	595mm x 600mm
Weight	20.0kg	24.0kg
Wheels	Tubed	
Framework	Triple zinc galvanised lightweight tube	
Tank	25 litre moulded	
Battery	9.0 amp hour cyclic rechargeable battery	
Battery Charger	3 stage charger	
Pump	Shurflo with in-line strainer	
Fuse	5A blade fuse	
Boom	1.5 metre 3 nozzle aluminium tubular boom	
Nozzle Filters	50 mesh	
Nozzles	3 x Brown 05 110° standard flat fan	

Calibration Guide

Follow the procedure below for both 3 nozzle boom and hand lance calibration.

How to check calibration - 3-nozzle boom

- 1) Ensure the battery is fully charged and there is 8 litres of clean water in the tank.
- 2) Ensure all air is removed from the pipe work by spraying out approximately 2 litres of water. This will remove any air trapped in the pipe work and pump.
- 3) Put a bucket or measuring beaker, sufficient in size to hold at least two litres of water, underneath each nozzle. Switch on the machine for exactly one minute. The three collecting vessels should be as stated in the chart of this manual.

The results should always replicate the information shown in the table. If the result achieved shows an increase in the stated output, this is due to nozzle tip wear. If the result is more than 7% above the guide table on any of the three nozzles, replace all three nozzle tips with new ones. If the calibration test shows a reduction on output compared to the spray guide table, check that all the filters are clean and repeat the above test, again making sure that any trapped air is sprayed out of the system before starting the calibration check. If the calibration tests show the output to be below 7% of the results shown in the spray guide table, contact Vitax on the technical service line.

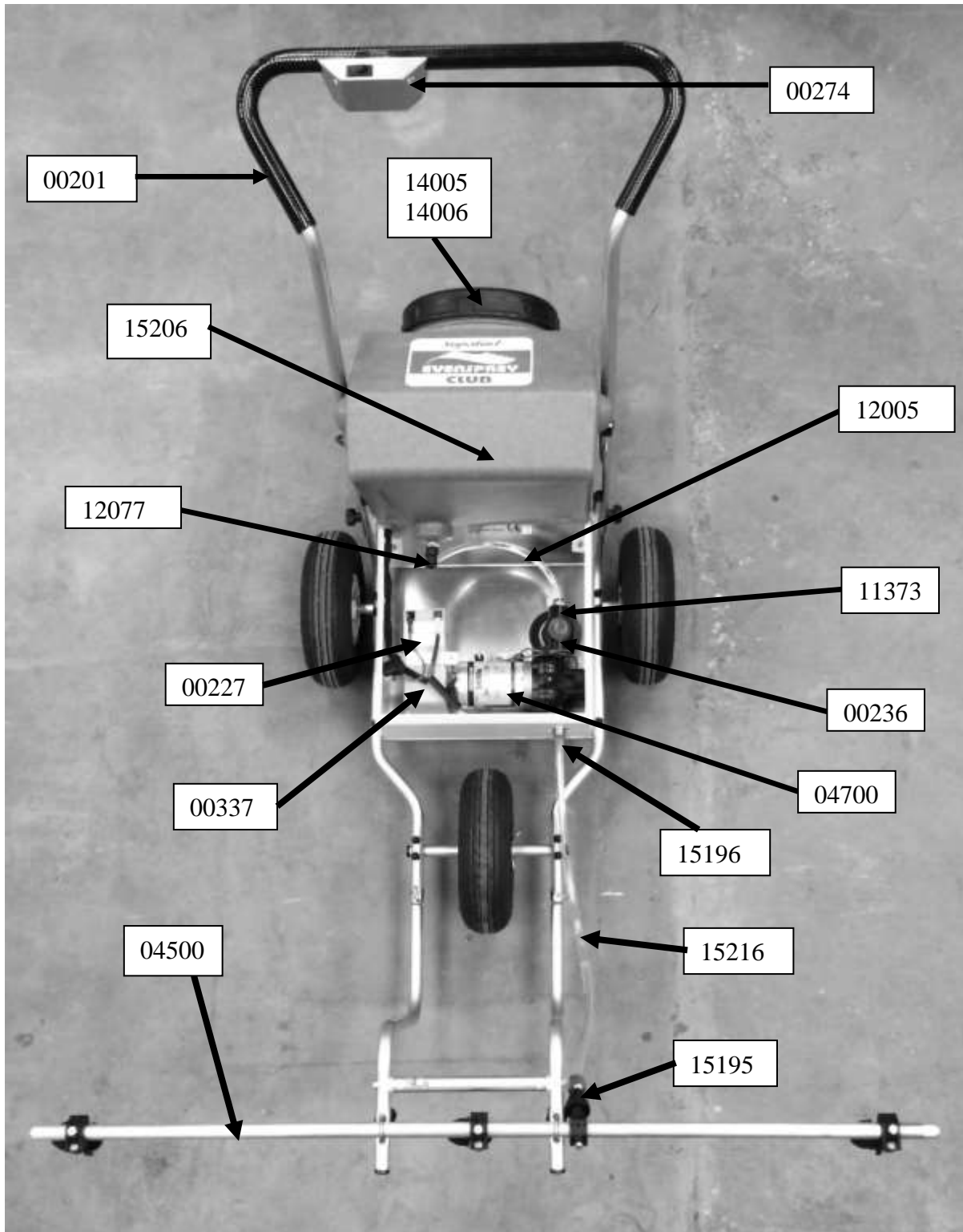
How to Check Walking Speed to Maximise Spray Accuracy

The EvenSprey CLUB is designed to give a constant output at all times. Speed of travel is thus important. The required speed is 2.25mph or 1 metre per second. It is advisable to practice walking speed so that 1 metre per second can be achieved. To do this, a measured distance of 10 metres is required. Simply practice covering the 10 metres in 10 seconds. The correct speed of travel will then become evident.

EvenSprey CLUB Spare Parts Listing

Order Code	Description
04700	PUMP
00227	BATTERY
00274	SWITCH
00337	LOOM
00201	HANDLEBAR UNIT COMPLETE WITH LOOM & BRACKET TO HOLD SWITCH
14006	8" BASKET FILTER
14005	8" TANK LID
12077	10MM TANK OUTLET ELBOW
11395UK	BATTERY CHARGER – UK
11395EC	BATTERY CHARGER- EUROPEAN
11299	FRONT AXLE COMPLETE WITH R PINS, WASHERS
00210	REAR AXLE COMPLETE WITH R PINS, WASHERS
00229	BATTERY RETAINING BAR COMPLETE WITH BOLTS
15206	EVENSPREY CLUB TANK
04816	BOOM MOUNT COMPLETE WITH FITTINGS
04500	BOOM COMPLETE
15216	12MM TUBING – IN BULK (1M)
15195	12MM QUICK RELEASE FITTING ON THE BOOM
15196	12MM QUICK RELEASE FITTING ON THE PUMP OUTLET
00247	PACK OF 5 STAINLESS STEEL NOZZLE FILTERS (50 MESH)
04041/P4	PACK OF 4 BROWN 05 NOZZLE TIPS
04042	J BOLT & HAND WHEEL SET (2 OF EACH)
00306	D CLAMPS SET (2 OF EACH)
00236	IN-LINE STRAINER
00237	IN-LINE STRAINER MESH
	Optional Extras
15219	HAND LANCE

EvenSprey CLUB Spare Parts Diagram



NOTES



WWW.SUPATURF.CO.UK

Visit our website for more information on our range of line marking machines and line marking liquids. Also available are informational videos offering demonstrations of Supaturf line marking machines and some trouble shooting guides.

ONLINE SPARE PARTS SERVICE

Comprehensive ranges of spare parts for all Supaturf line marking machines are available. If you require spare parts for your machine, visit the website where you will find a complete listing for each machine.

**Vitax Ltd
Owen Street
Coalville
Leicester
LE67 3DE**

Tel: 01530 510060 Fax: 01530 510299

Email: sales@vitax.co.uk

Web: www.vitax.co.uk